

2020 SERVICE LEVELS

WASTE MANAGEMENT

WHAT ARE OUR GOALS?

SUSTAINABILITY

☐

VIBRANCY

☐

☐ Provide convenient waste management services for ratepayers

☐ Clean and safe community

☐ Provide a managed, controlled system to minimize liability

HOW WILL WE ACCOMPLISH OUR GOALS?

Key Strategies

STRATEGY	DESCRIPTION
Cost Effectiveness	Provide door to door garbage pickup for a cost recovery fee (bins are sold) for residents in the hamlets of Blackfoot, Clandonald, and Islay. Ratepayers also have to pay to dispose of certain items at the transfer sites.
Safe Disposal of Waste	Provide residents with a safe way to dispose of items in convenient locations that will minimize the distance rate payers have to travel to dispose of waste
Awareness & Education	To share with ratepayers the cost of services, as well as costs of removal and clean up when items are not disposed of properly (ie. Dumped in County ditches). Utilize our grader men to monitor for areas that may need attention.

WHEN & HOW WILL WE DO THIS?

Actions/Initiatives

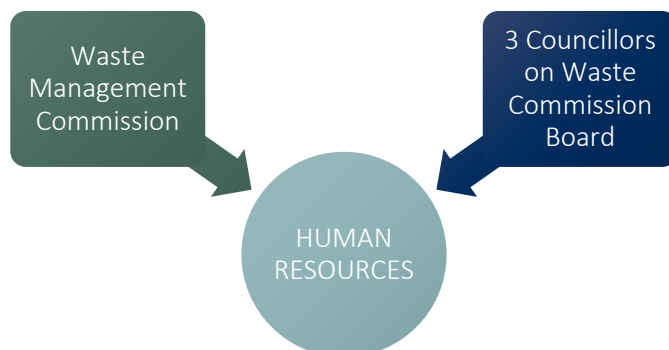
ACTION	EXPLANATION	ACHIEVEMENT DEADLINE
Service Coordination	Waste Management Commission is charged with the responsibility to set other levels of service (i.e. Hours of operation of transfer stations etc.). Council is represented on the Waste Commission board.	Ongoing
Waste Initiatives	Participate in the Toxic Round Up projects through partnership with Lloydminster and Vermilion and to encourage recycling round up projects to minimize waste that is transferred. Continue work on long term solutions for agriculture plastics and grain bags. Develop long term strategy for new waste site	Ongoing
Ratepayer awareness	Advise residents of the costs for waste management by having a specific mill rate, as well as awareness of ditch dumping and identify the under lying factors	Ongoing
Waste Bins	Require subdivisions to have utility lots for garbage bins. Private bins are the responsibility of the rate payers and are controlled through Policy AD006.	Ongoing

Clean Communities	Provide, at cost, large dumpsters once a year for hamlet cleanup. Review our recycling strategy within the next 3 years	Q4 2019
Regional Partnerships	Work with neighboring communities for a regional plan for garbage collection	Q4 2019

Main Accomplishments from past year

- Opened a new transfer station site in Lloydminster (in partnership with Quick Pick) to serve the east side of the County for household waste disposal
- Total of 7 garbage related complaints were recorded in 2017;
- Total of 20 garbage related complaints were recorded in 2018;
- January until September 2019, there have been a total of 10 garbage related complaints recorded

HUMAN RESOURCES



FINANCIAL RESOURCES



DETAILS	
REVENUE	User fees; hamlet garbage collection based on flat amount billing; mill rate; lease payment for County land purchased as a possible future landfill is allocated to this function
EXPENSES	Requisition levy; costs for the Board members are paid by the commission (who recoup those costs through the requisitions)
CAPITAL	Nothing this year

MEASUREMENTS

CATEGORY	MEASUREMENT	GOAL
FINANCIAL	Budget	Operate within budget
	Billing	Maintain accuracy with billing
ORGANIZATIONAL	Time frame	Complete actions in allotted time frames
CUSTOMER CARE	Customer expectations	Maintain convenient services and transfer station hours

MISSION	Sustainable Vibrant Diversified	Reduce ditch dumping concerns to 15 calls/year
---------	---------------------------------------	--

REGULATIONS AND POLICIES

Policy AD006 – Restriction for private waste containers
Alberta Environment regulates the proper disposal methods and locations

HISTORY/BACKGROUND

- Commission established in 2005
- County land for land fill is not operational and there are no plans in the immediate future for its development -it is a contingency plan in case there is a problem with the Beaver Regional Waste Commission
- Currently the Waste Management Authority has a 30 year agreement with Beaver Regional Waste Commission
- The Town of Vermilion landfill was used for disposal of County waste until December 2002 under a formula in a bylaw for the waste management authority (comes under the annual requisition). Some reclamation costs may be incurred in the future. (\$1,000 for the monitoring wells which will have expired in 2009)
- A deficit was experienced by the Waste Commission in 2009, therefore the Commission has asked for an additional amount above the requisition